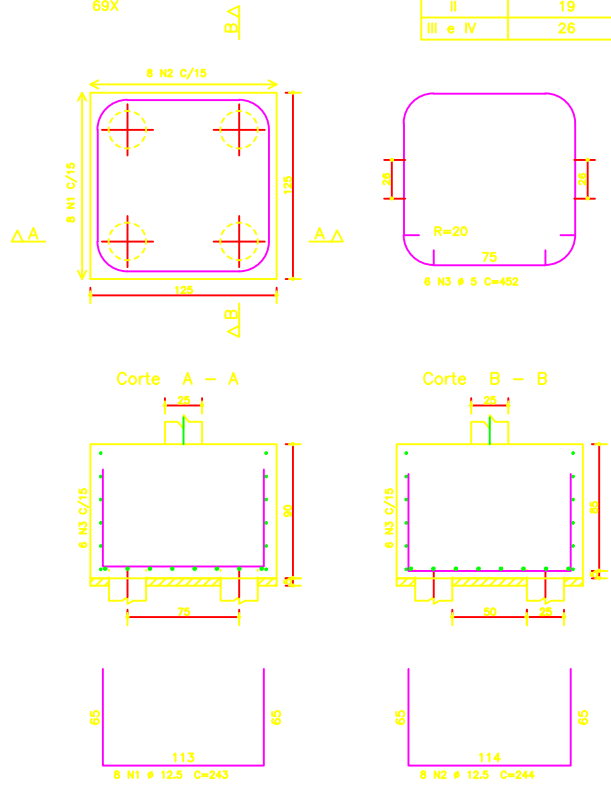


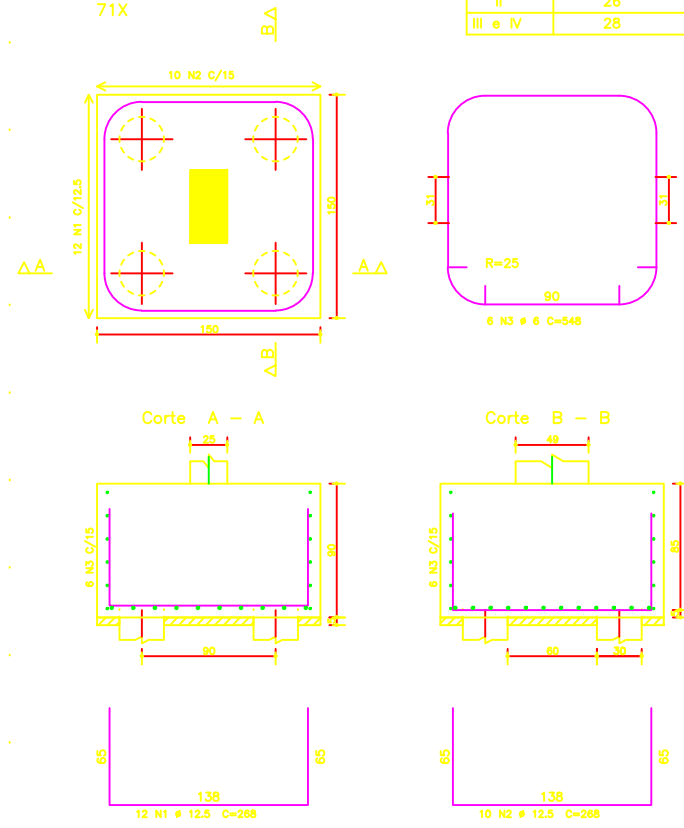
B1
(Esc 1:25)
69X

MÓDULO	QUANTIDADE
I	24
II	19
III e IV	26



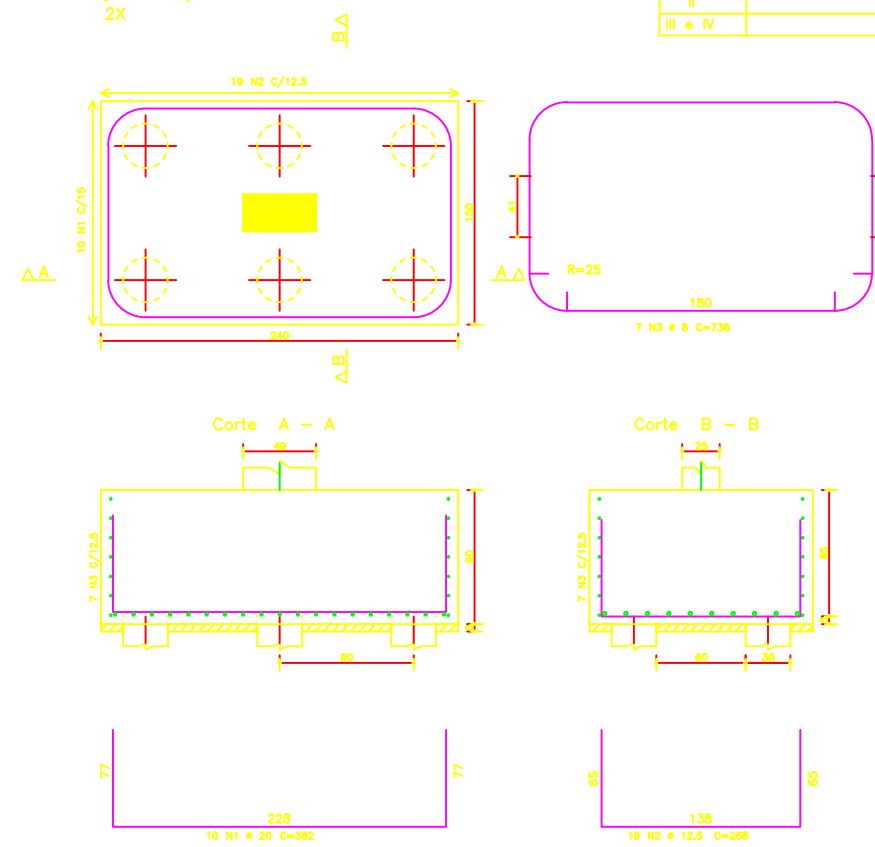
B2
(Esc 1:25)
71X

MÓDULO	QUANTIDADE
I	17
II	26
III e IV	28



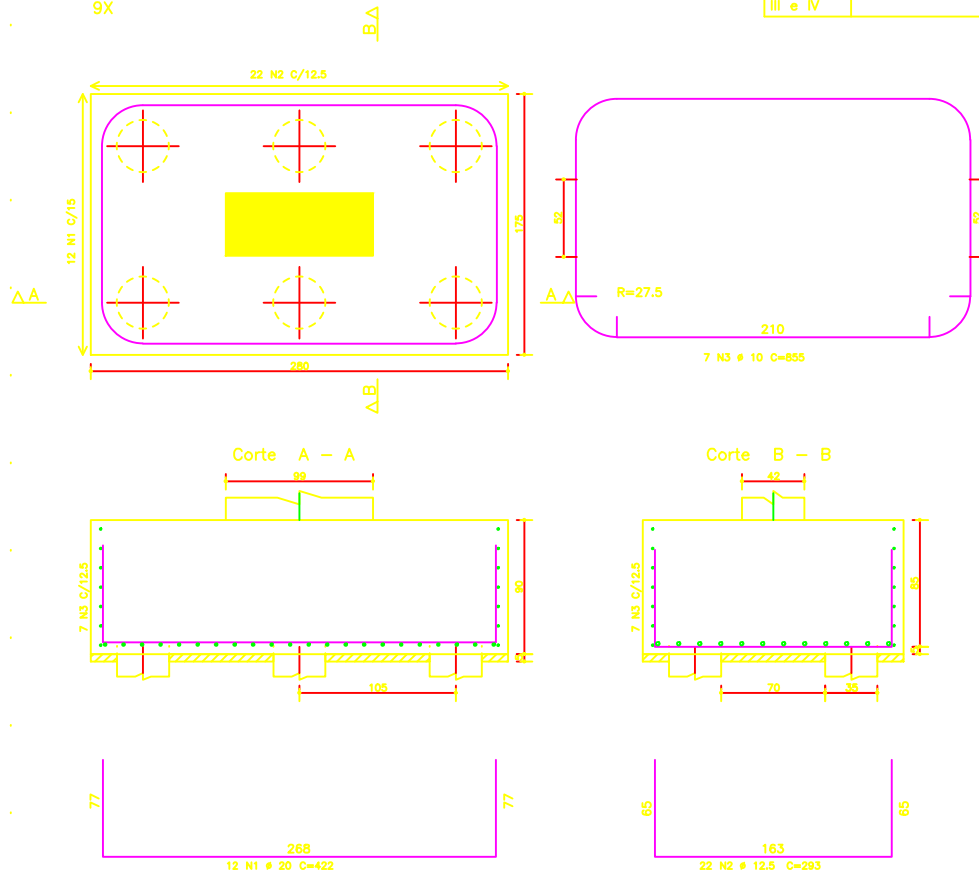
B3
(Esc 1:25)
2X

MÓDULO	QUANTIDADE
I	2
II	
III e IV	



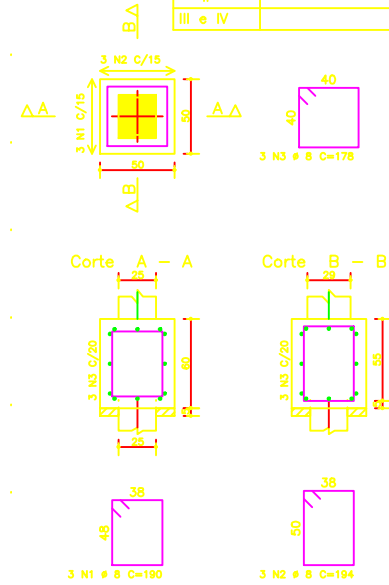
B4
(Esc 1:25)
9X

MÓDULO	QUANTIDADE
I	9
II	
III e IV	

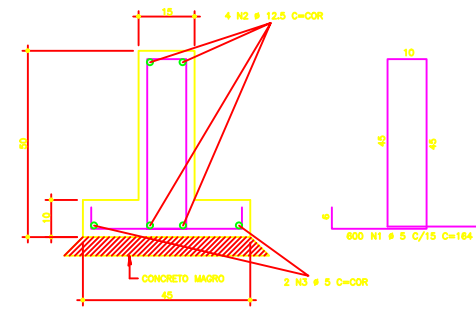


B0
(Esc 1:25)
8X

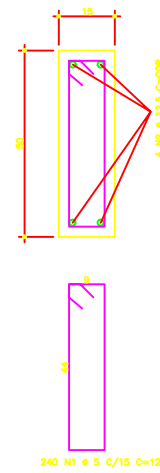
MÓDULO	QUANTIDADE
I	8
II	
III e IV	



SAPATA CORRIDA



CINTA (15x50)



ÁÇO	POS	BIT (mm)	QUANT	COMPRIMENTO UNIT (cm)	TOTAL (cm)
B1 (X69)					
50A	1	12.5	552	243	134136
50A	2	12.5	552	244	134888
60B	3	8	414	452	187128
B2 (X71)					
50A	1	12.5	852	268	228336
50A	2	12.5	710	268	190280
60B	3	8	428	548	233448
B3 (X2)					
50A	1	20	20	382	7640
50A	2	12.5	38	268	10184
60B	3	8	14	738	10332
B4 (X9)					
50A	1	20	108	422	43576
50A	2	12.5	198	283	56014
50A	3	10	63	855	53865
B0 (X8)					
60B	1	8	24	190	4560
60B	2	8	24	194	4656
60B	3	8	24	178	4272
CINTA (15x50)					
60B	1	5	240	124	29760
50A	2	12.5	4	-CORR-	16000
SAPATA CORRIDA					
60B	1	5	600	184	98400
50A	2	12.5	4	-CORR-	36800
60B	3	5	2	-CORR-	18400

ÁÇO	BIT (mm)	COMPR (m)	PESO (kg)
50A	10	536	336
50A	12.5	8084	8084
50A	20	532	1330
60B	5	3337	534
60B	6	2334	518
60B	8	238	95
Peso Total 50A =			9754 kg
Peso Total 60B =			1147 kg

OBS:
Fck=250kg/cm2 SOMENTE PARA OS ELEMENTOS ESTRUTURAIS
CONSTANTES NESTA PRANCHA. PARA O RESTANTE DA OBRA O CONCRETO
ESPECIFICADO É Fck=400kg/cm2.

ENECOL - Engenharia Estrutural e Consultoria Ltda				
Av. Antonio Baello, 3025 sala 307 Fone: 201 9187 e 201 9188 - Fax 211 8118				
Natal - RN				
JOACI ARAUJO - MARCIO MEDEIROS - ROBINSON AZEVEDO				
NUMERO PROJ: 1829	CLIENTE: ECOCIL	OBRA: ESTADIO DE FUTEBOL "FRASQUEIRAO"		
PRANCHA	ASSUNTO:	ARMAÇÃO DOS BLOCOS		
18/36				
CONF.	CONCRETO	ÁÇO	DATA	ESCALA(S)
	fck= 250 kgf/cm ²	CA50A CA60B	SET/2002	1:25
				DESENHO
				CAROL