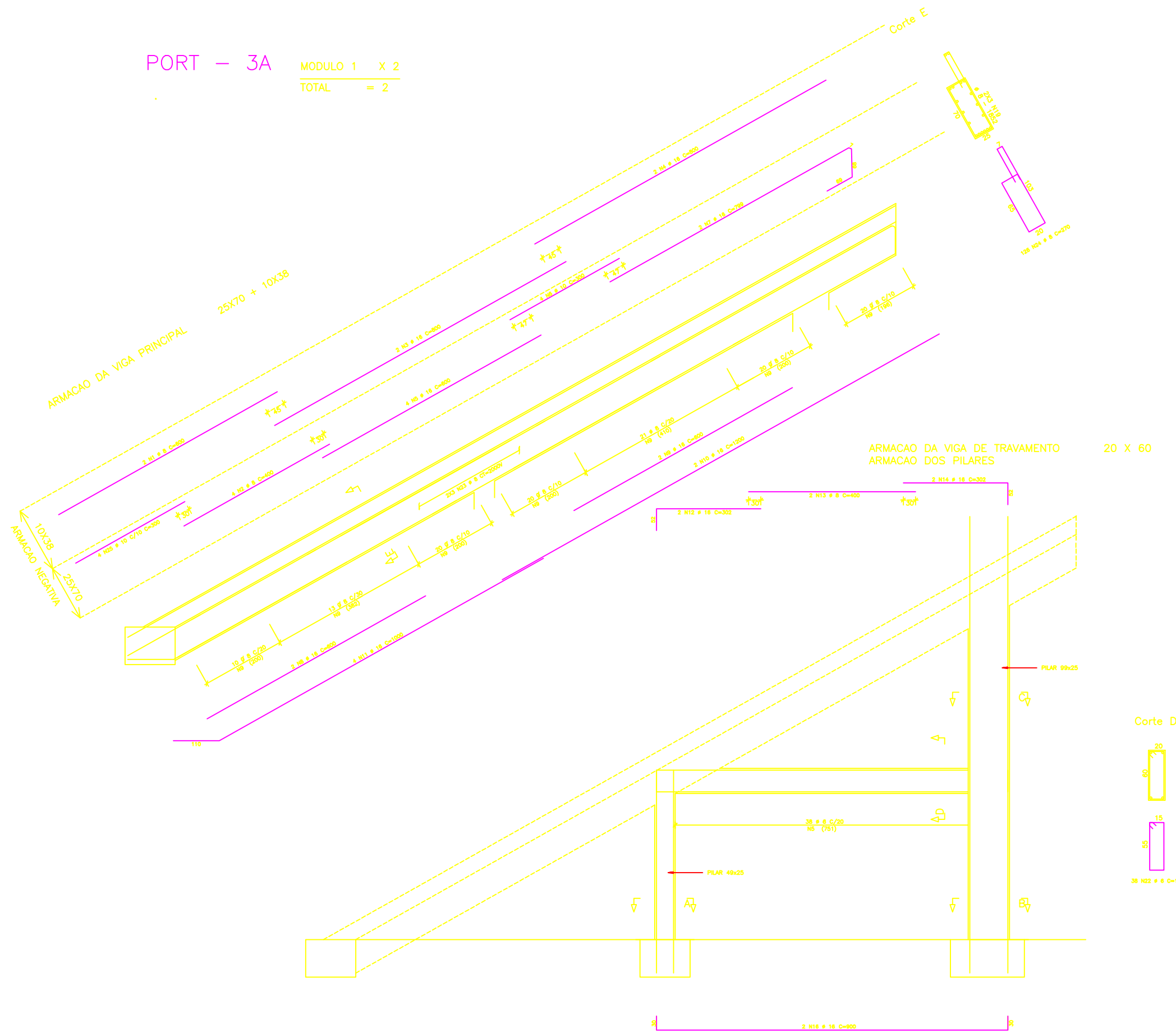


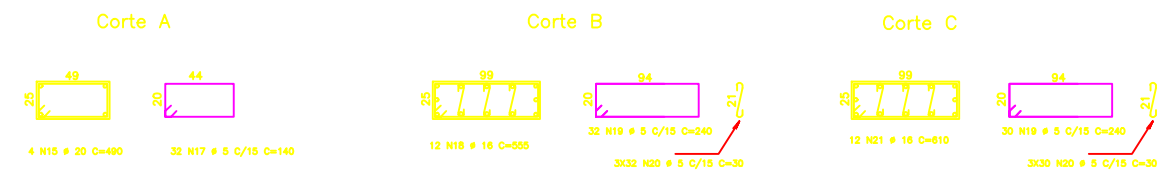
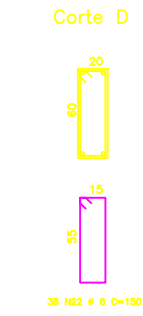
PORT - 3A
 MODULO 1 X 2
 TOTAL = 2



AÇO	POS	BIT (mm)	QUANT	COMPRIMENTO	
				UNIT (cm)	TOTAL (cm)
(X2)					
60B	1	8	4	600	2400
60B	2	8	8	400	3200
50A	3	16	4	800	3200
50A	4	16	4	800	3200
50A	5	16	8	600	4800
50A	6	10	8	300	2400
50A	7	16	4	799	3196
50A	8	16	4	800	2400
50A	9	16	4	800	2400
50A	10	16	4	1200	4800
50A	11	16	8	1000	8000
50A	12	16	4	302	1208
60B	13	8	4	400	1600
50A	14	10	4	302	1208
50A	15	20	8	490	3920
50A	16	16	4	900	3600
60B	17	5	64	140	8960
50A	18	10	24	555	12960
60B	19	5	64	240	15360
60B	20	5	180	30	5400
60B	21	16	24	610	14400
60B	22	6	76	150	11400
60B	23	8	12	VAR	24000
60B	24	8	252	270	68040
50A	25	10	8	300	2400

RESUMO AÇO CA 50-60			
AÇO	BIT (mm)	COMPR (m)	PESO (kg)
60B	5	297	48
60B	6	114	25
60B	8	992	397
50A	10	48	30
50A	12,5	274	274
50A	16	380	608
50A	20	39	88
Peso Total	60B =		470 kg
Peso Total	50A =		1010 kg

20 X 60



ENECOL - Engenharia Estrutural e Consultoria Ltda
 Av. Antonio Balillo, 3025 sala 307 Fone: 201 9187 e 201 9188 - Fax 211 8118 Natal - RN

JOACI ARAUJO - MARCIO MEDEIROS - ROBINSON AZEVEDO

NUMERO PROJ: 1829
 CLIENTE: EOCOL
 OBRA: ESTADIO DE FUTEBOL "FRASQUEIRA"

PRANCHA: 16/36
 ASSUNTO: ARMACAO DO PORT - 3A

COMP: CONCRETO fck= 400 kgf/cm² AÇO CASOA CA08B DATA OUT/2002 ESCALA(0) 1 : 50 DESENHO CAROL